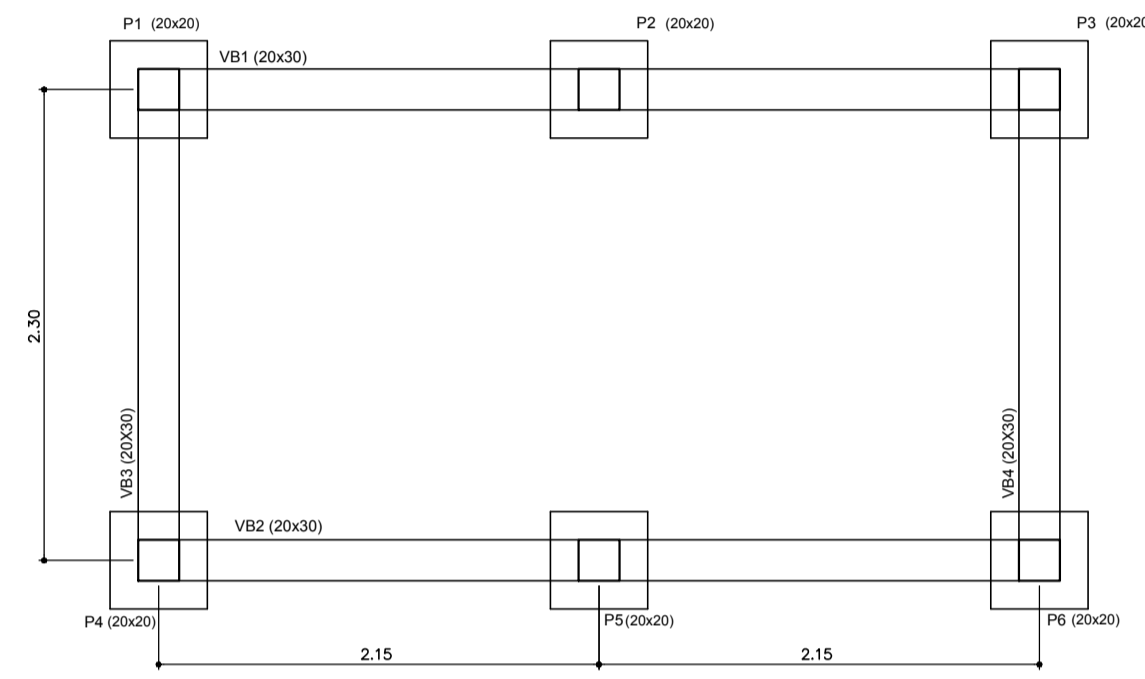
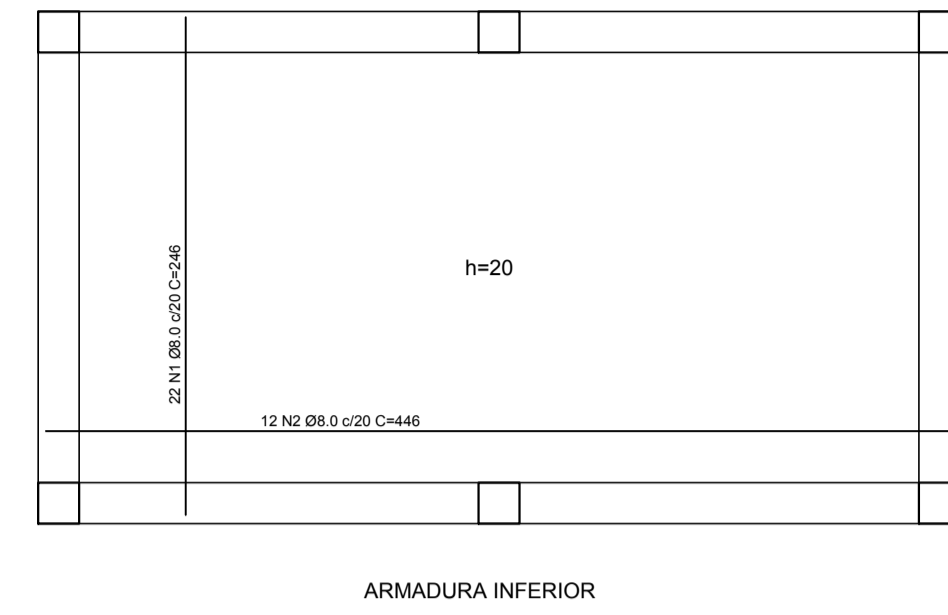


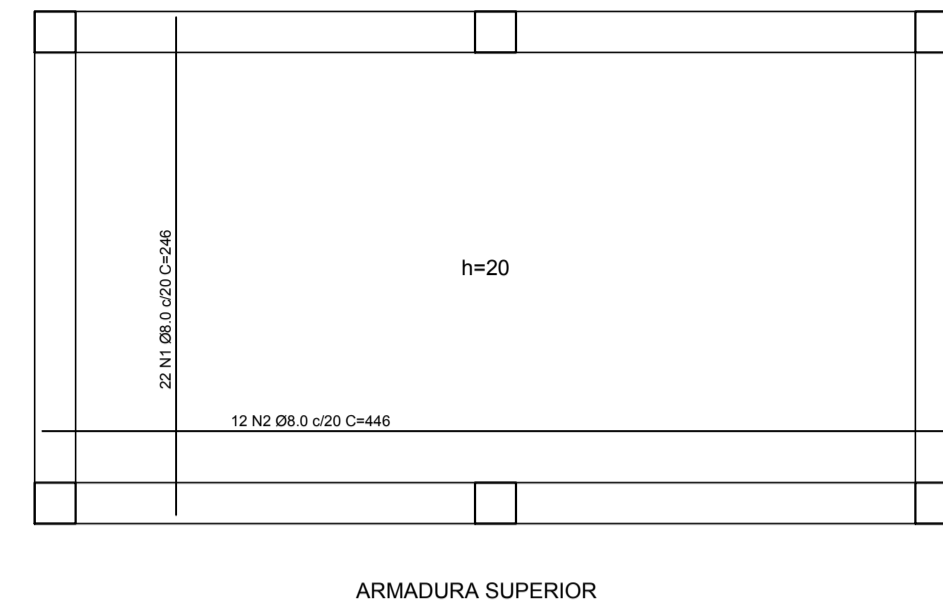
Forma - Fundação  
escala 1:25



Forma - Piso  
escala 1:25

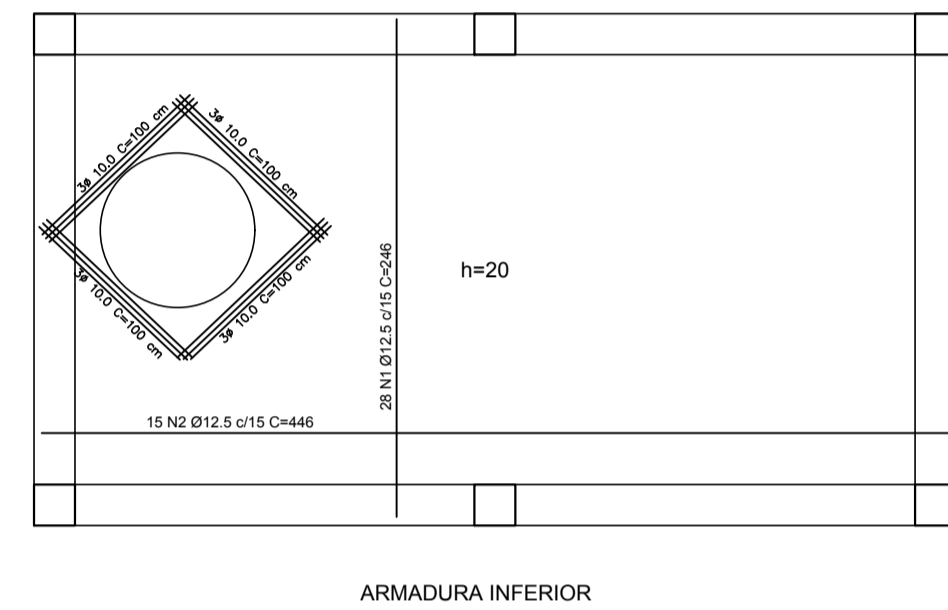


ARMADURA INFERIOR

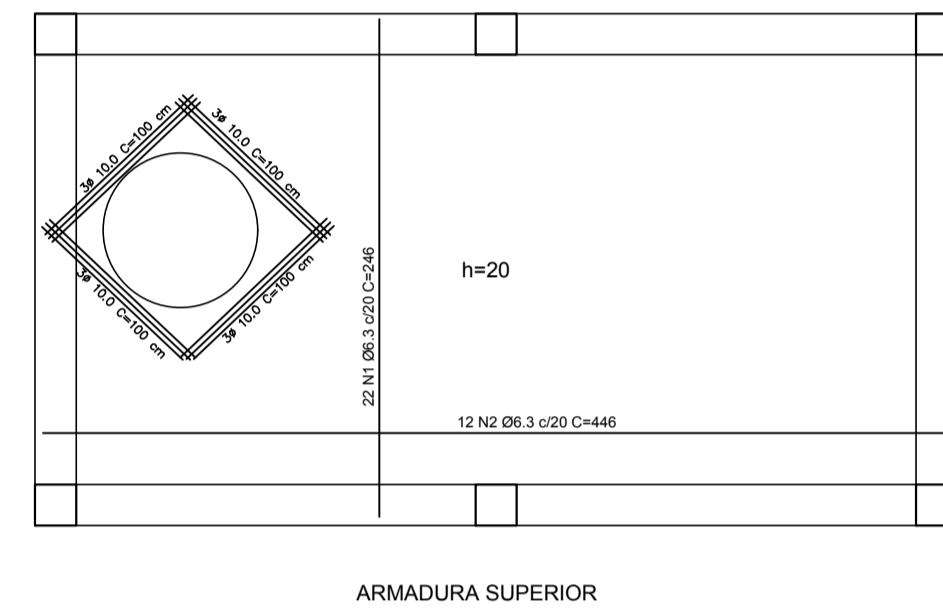


ARMADURA SUPERIOR

LAJE FUNDO  
ESC. 1:25



ARMADURA INFERIOR



ARMADURA SUPERIOR

LAJE PISO  
ESC. 1:25

RELAÇÃO DO AÇO - LAJE FUNDO

LAJE FUNDO	AÇO	N	DIAM	Q	UNIT	C.TOTAL	
			(mm)		(kg)	(kg)	
	50	1	8.0	44	246	10824	
		2	8.0	24	446	10704	
	PESO TOTAL						

RESUMO DO AÇO

AÇO	DIAM	C.TOTAL	PESO+10%
	(mm)	(kg)	(kg)
CA50	8.0	21528	93.5
PESO TOTAL			
CA50			93.5

Vol. concreto total = 2,25 m³  
Área de forma total = 11,25 m²  
fck = 200,00 kgf/cm²

RELAÇÃO DO AÇO - LAJE PISO

LAJE PISO	AÇO	N	DIAM	Q	UNIT	C.TOTAL
			(mm)		(kg)	(kg)
	50	1	6.3	22	246	5412
		2	6.3	12	446	5352
		3	10.0	12	100	2400
		4	12.5	28	246	6888
		5	12.5	15	246	3690
	PESO TOTAL					

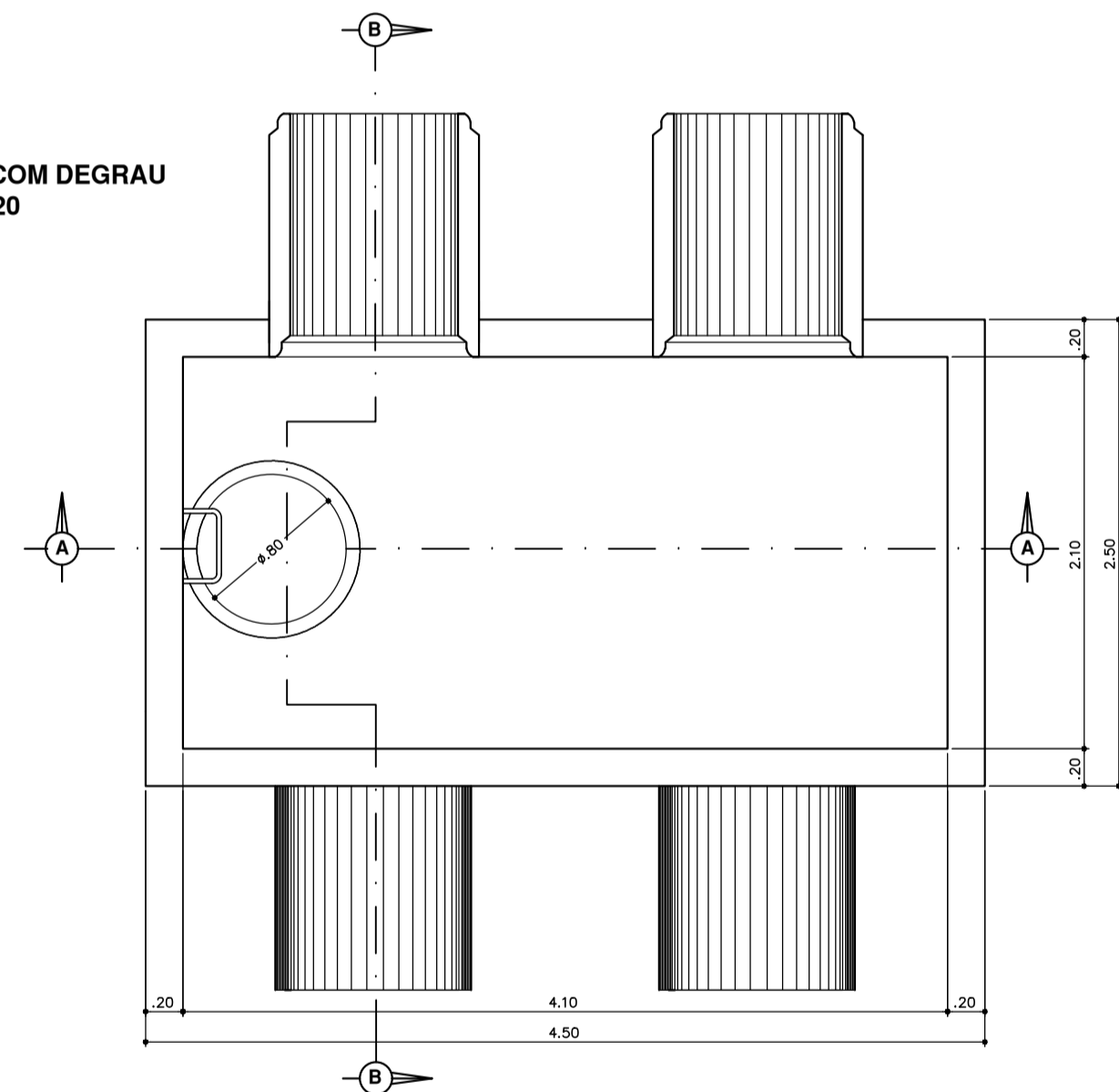
RESUMO DO AÇO

AÇO	DIAM	C.TOTAL	PESO+10%
	(mm)	(kg)	(kg)
CA50	6.3	107.6	29.3
CA50	10.0	24.0	19.2
CA50	12.5	105.7	115.9
PESO TOTAL			
CA50			161.4

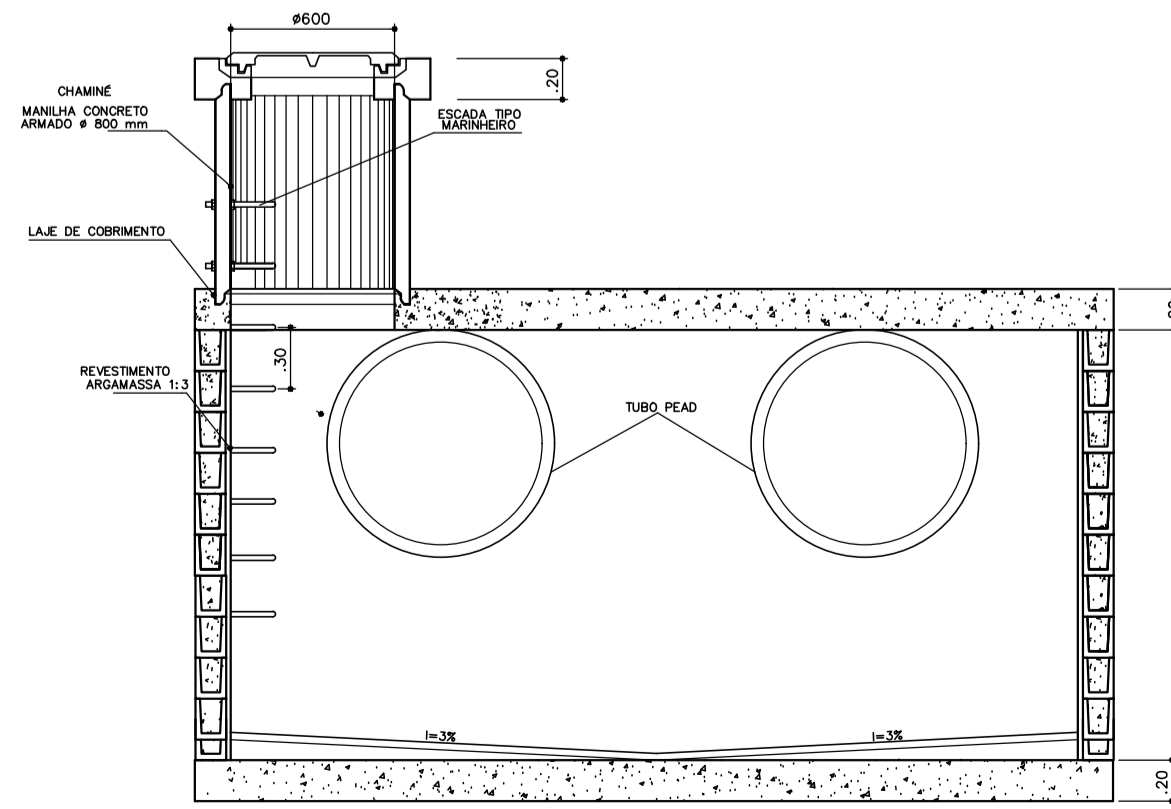
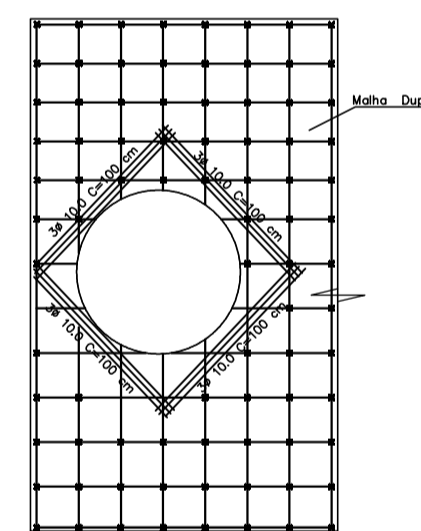
Vol. concreto total = 2,25 m³  
Área de forma total = 11,25 m²  
fck = 200,00 kgf/cm²

Vol. concreto total = 0,84 m³  
Área de forma total = 8,4 m²  
fck = 200,00 kgf/cm²

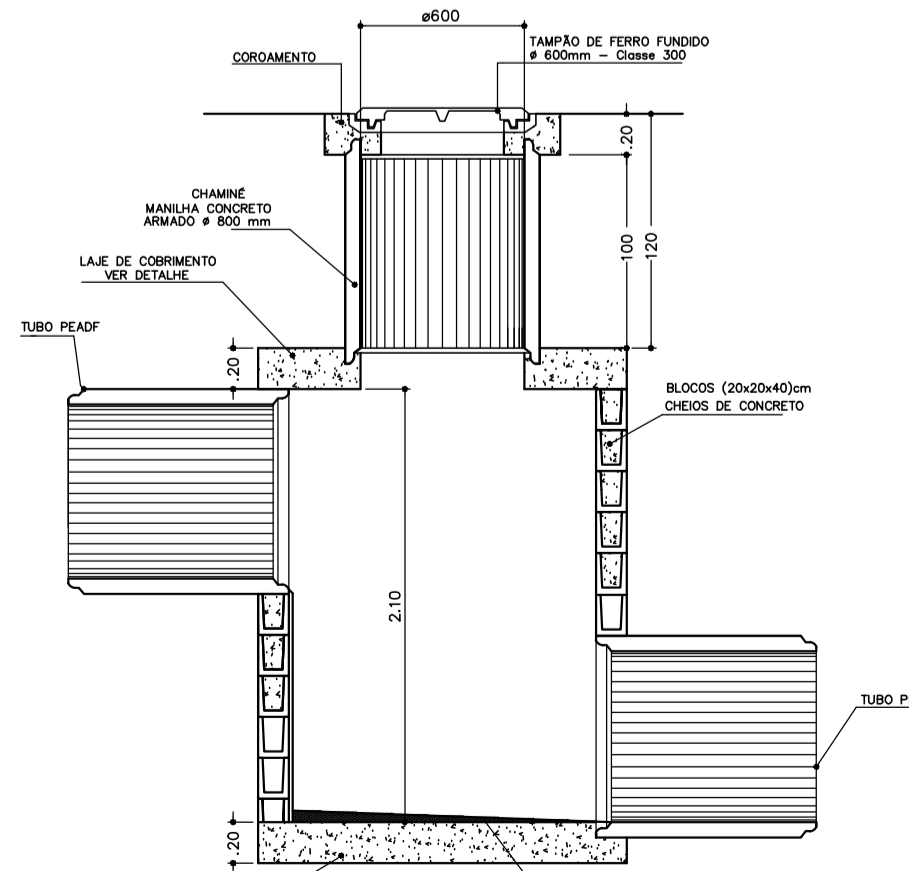
POÇO-DE-VISITA COM DEGRAU  
ESCALA 1/20



PLANTA BAIXA

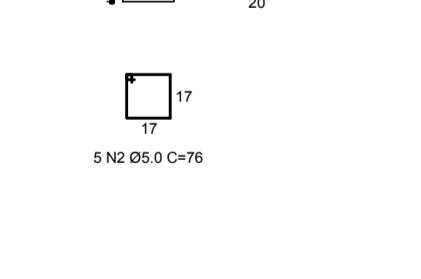
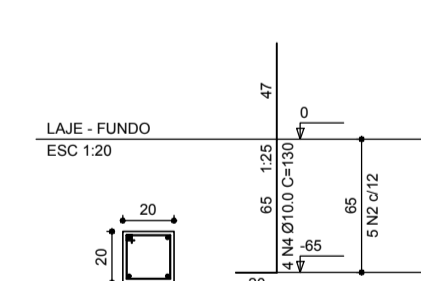


CORTE AA

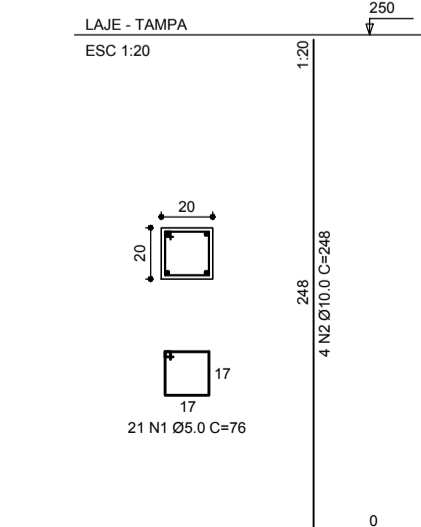


CORTE BB

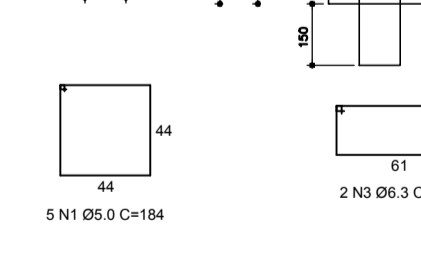
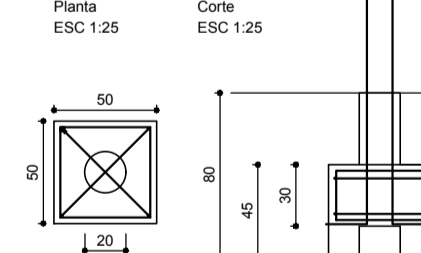
P1=P2=P3=P4=P5=P6



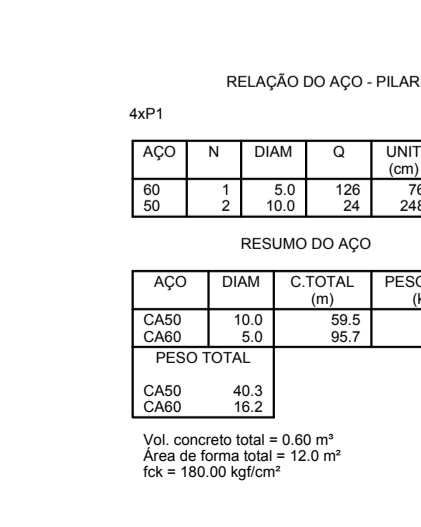
P1=P2=P3=P4=P5=P6



B1=B2=B3=B4=B5=B6  
1020



P1=P2=P3=P4=P5=P6



RELAÇÃO DO AÇO - LAJE FUNDO

LAJE FUNDO	AÇO	N	DIAM	Q	UNIT	C.TOTAL
			(mm)		(kg)	(kg)
	50	1	8.0	44	246	10824
		2	8.0	24	446	10704
	PESO TOTAL					

RESUMO DO AÇO

AÇO	DIAM	C.TOTAL	PESO+10%
	(mm)	(kg)	(kg)
CA50	8.0	21528	93.5
PESO TOTAL			
CA50			93.5

Vol. concreto total = 2,25 m³  
Área de forma total = 11,25 m²  
fck = 200,00 kgf/cm²

RELAÇÃO DO AÇO - LAJE PISO

LAJE PISO	AÇO	N	DIAM	Q	UNIT	C.TOTAL
			(mm)		(kg)	(kg)
	50	1	6.3	22	246	5412
		2	6.3	12	446	5352
		3	10.0	12	100	2400
		4	12.5	28	246	6888
		5	12.5	15	246	3690
	PESO TOTAL					

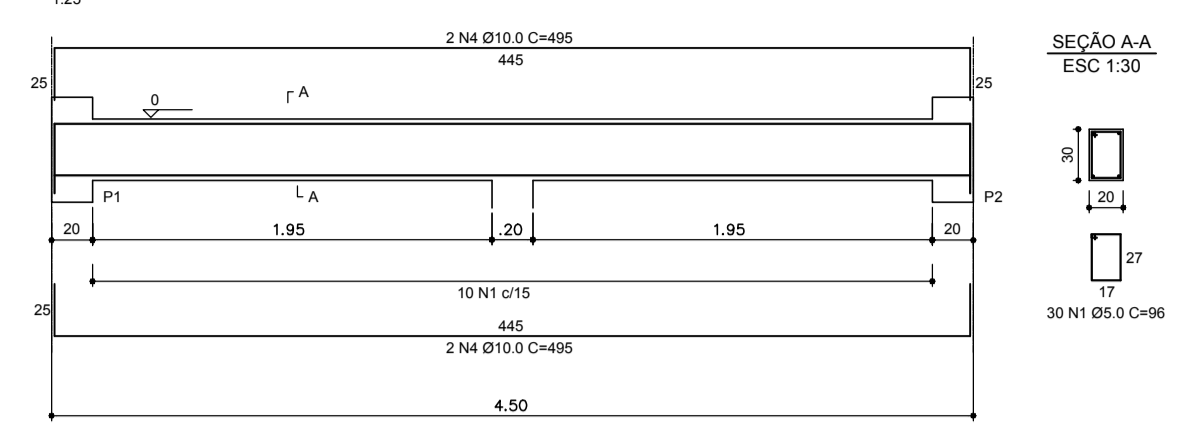
RESUMO DO AÇO

AÇO	DIAM	C.TOTAL	PESO+10%
	(mm)	(kg)	(kg)
CA50	6.3	107.6	29.3
CA50	10.0	24.0	19.2
CA50	12.5	105.7	115.9
PESO TOTAL			
CA50			161.4

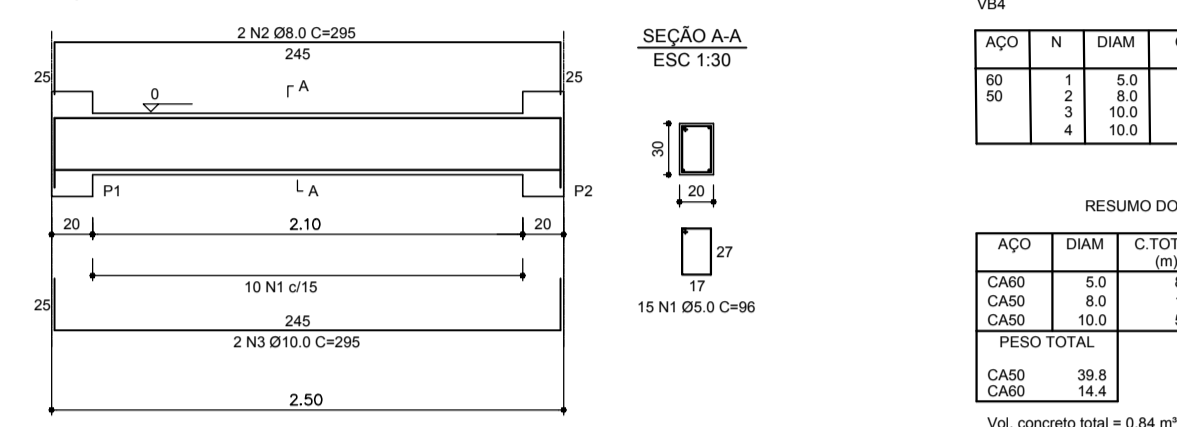
Vol. concreto total = 2,25 m³  
Área de forma total = 11,25 m²  
fck = 200,00 kgf/cm²

Vol. concreto total = 0,84 m³  
Área de forma total = 8,4 m²  
fck = 200,00 kgf/cm²

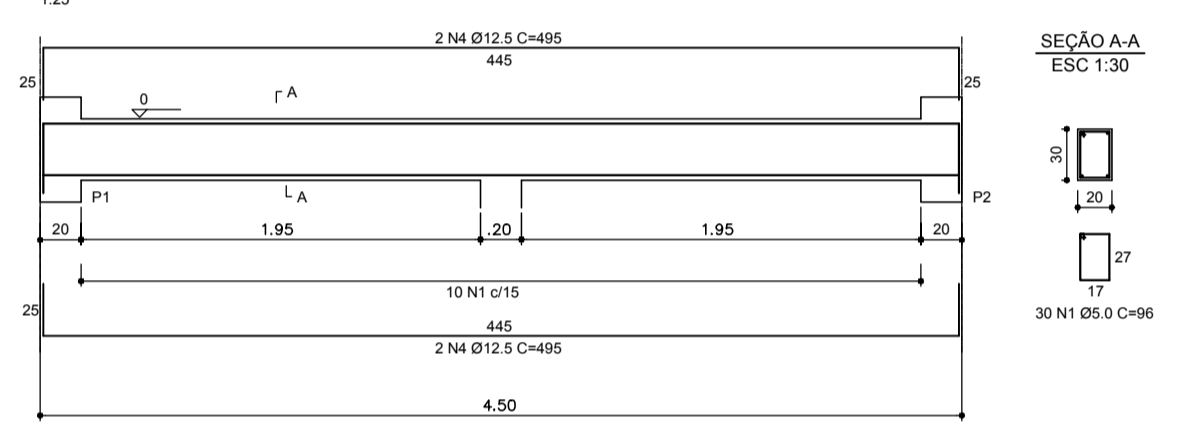
VB1 = VB2



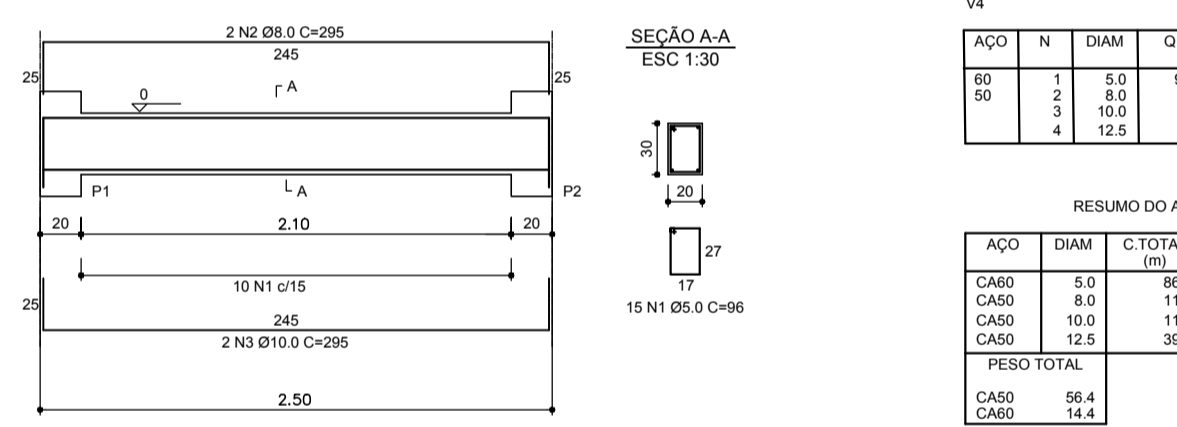
VB3 = VB4



V1 = V2



V3 = V4



RELAÇÃO DO AÇO - BLOCOS

4x4	4xP1	AÇO	N	DIAM	Q	UNIT	C.TOTAL
				(mm)		(kg)	(kg)
		50	1	5.0	30	184	5520
			2	5.0	30	76	2380
			3	6.3	12	182	2184
			4	10.0	24	138	3120
	PESO TOTAL						

RESUMO DO AÇO

AÇO	DIAM	C.TOTAL	PESO+10%
	(mm)	(kg)	(kg)
CA50	5.0	96.4	14.4
CA50	6.3	21.8	5.8
CA50	10.0	31.2	21.2
CA50	12.5	76	13.1
PESO TOTAL			
CA50			27.8
CA50			13.1

Vol. concreto total = 0,61 m³  
Área de forma total = 4,32 m²  
fck = 180,00 kgf/cm²

RELAÇÃO DO AÇO - PILARES

4xP1	AÇO	N	DIAM	Q	UNIT	C.TOTAL
			(mm)		(kg)	(kg)
	50	1	5.0	128	76	9576
		2	10.0	24	246	5952
	PESO TOTAL					

RESUMO DO AÇO

AÇO	DIAM	C.TOTAL	PESO+10%
	(mm)	(kg)	(kg)
CA50	5.0	96.4	14.4
CA50	10.0	24.0	19.2
PESO TOTAL			
CA50			49.3
CA50			16.2

Vol. concreto total = 0,60 m³  
Área de forma total = 12,0 m²  
fck = 180,00 kgf/cm²

PREFEITURA DO MUNICÍPIO DE VARGINHA  
SEPLA - SECRETARIA MUNICIPAL DE PLANEJAMENTO.

PROPRIETÁRIO: AV. PLÍNIO SALGADO	DATA: ABRIL/2017
PROJETISTA: PREFEITURA DO MUNICÍPIO DE VARGINHA	ARQUIVO: I.A.T
AUTOR DO PROJETO:	MAPOTECA:
TÍTULO: DRENAGEM AV. PLÍNIO SALGADO	
PRONOME: Única	CONTEDO DA PRONOME: POÇO DE VISITA